



QM MINI

SHANKS ALOT PROMO!

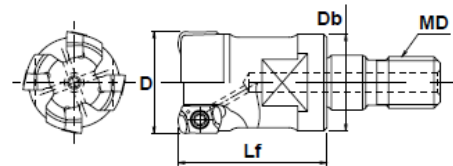
**PURCHASE ONE MODULAR HEAD SHANK,
PLUS 20 INSERTS AND RECEIVE 1pc OF SAME
SIZE THREAD MODULAR HEAD AT NO CHARGE.**

EFFECTIVE: June 1st, 2019 thru July 31st, 2019

ALL SALES ARE FINAL ON PROMO ITEMS

QM MINI

New Generation of High Feed Mills
MPM Style - G Body

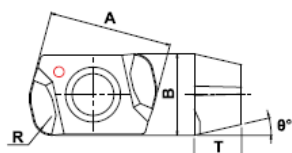


Modular Head Specifications

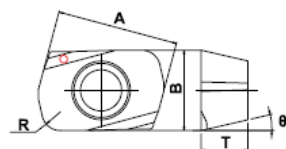
	CATALOG NUMBER	STK	DIMENSIONS				HEAD TORQUE		INSERT	Q	PARTS	
			D	Lf	Db	MD	lbs./ft	Nm			Screw	Wrench
INCH	MPM-3050-M6	•	.500	.787	.452	M6	5.9	8	EOM**0602**ZER EOHW0602**ZTR YOHW0602**ZER-12 ZOMT0602**ZER	3	DSW-1840H	T-06
	MPM-4062-M8	•	.625	.905	.590	M8	11.8	16		4		
	MPM-5075-M10	•	.750	1.18	.708	M10	11.8	16		5		
	MPM-6100-M12	•	1.00	1.37	.945	M12	14.7	20		6		
	MPM-8125-M16	•	1.25	1.69	1.14	M16	18.4	25		8		
METRIC	MPM-2010-M6	•	10	18	9.5	M6	5.9	8	EOM**0602**ZER EOHW0602**ZTR YOHW0602**ZER-12 ZOMT0602**ZER	2	DSW-1840H	T-06
	MPM-2011-M6	•	11	18	9.7	M6	5.9	8		2		
	MPM-3012-M6	•	12	20	11.2	M6	5.9	8		3		
	MPM-3013-M6	•	13	20	11.5	M6	5.9	8		3		
	MPM-4016-M8	•	16	23	15	M8	11.8	16		4		
	MPM-4017-M8	•	17	23	15	M8	11.8	16		4		
	MPM-5020-M10	•	20	30	19	M10	11.8	16		5		
	MPM-5021-M10	•	21	30	19	M10	11.8	16		5		
	MPM-6025-M12	•	25	35	23.6	M12	14.7	20		6		
	MPM-7030-M16	•	30	43	29	M16	18.4	25		7		
	MPM-8032-M16	•	32	43	29	M16	18.4	25		8		

INSERTS

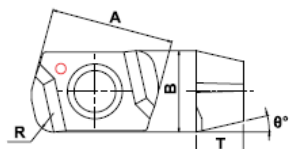
High feed insert (EOMT)



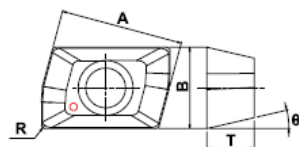
High hardened steel (EOHW)



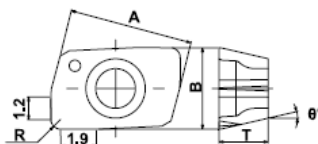
High feed insert for unfavorable condition (EOMW)



Shoulder milling insert (ZOMT)



"MIRROR INSERT" for finishing side & bottom face (YOHW)



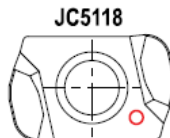
TYPE	CATALOG NUMBER	TOLERANCE	DIMENSIONS					PVD COATED					
			A	B	T	R	Ø	JC5118	JC8118	DH102	JC7560	JC8015	JC8050
High feed insert	EOMT060210ZER	M	6.5	4.3	2.5	1.0	13°		•		•		•
	EOMT060220ZER	M	6.5	4.3	2.5	2.0	13°		•				•
High feed insert for unfavorable condition	EOMW060210ZER	M	6.5	4.3	2.5	1.0	13°		•		•		•
High hardened steel	EOHW060210ZTR	H	6.5	4.3	2.5	1.0	13°		•	•			
	EOHW060220ZTR	H	6.5	4.3	2.5	2.0	13°		•	•			
Shoulder milling insert	ZOMT060202ZER	M	6.5	4.3	2.5	0.2	13°	•					•
	ZOMT060204ZER	M	6.5	4.3	2.5	0.4	13°	•					•
	ZOMT060208ZER	M	6.5	4.3	2.5	0.8	13°	•					•
"MIRROR INSERT" for finishing side & bottom face	YOHW060203ZER-12	H	6.5	4.3	2.6	0.3	13°			•		•	
	YOHW060205ZER-12	H	6.5	4.3	2.6	0.5	13°			•		•	
	YOHW060208ZER-12	H	6.5	4.3	2.6	0.8	13°			•		•	

DISCRIMINATION OF GRADE FOR MPM / PME INSERT

Each grade shows different mark around the hole for identification.



Discrimination mark



JC5118



JC8050/JC7560

MAGNETISER



- Magnetizing and demagnetizing the wrench can easily be done by inserting the tip into the magnetizer and rubbing lightly.
- Do not use in the vicinity of the equipment that can be influenced with magnetism.

CATALOG NUMBER	STOCK
MAGNETISER	•

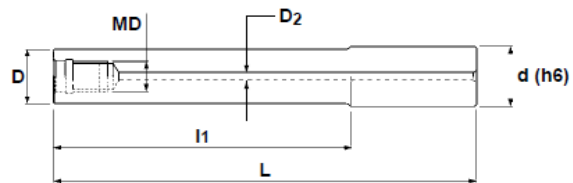
INCH

Modular Head Holders

Modular Head Holders

MSN Type

Solid Carbide with coolant thru



Specifications

CATALOG NUMBER	STK	DIMENSIONS					
		D	I1	L	d	MD	D2
MSN-M6-0.5-S050C	•	.452	.500	2.50	.500	M6	.118
MSN-M6-1.0-S050C	•	.452	1.00	3.15	.500	M6	.118
MSN-M6-2.0-S050C	•	.452	2.00	3.93	.500	M6	.118
MSN-M6-3.0-S050C	•	.452	3.00	5.12	.500	M6	.118
MSN-M8-0.5-S062C	•	.591	.500	3.50	.625	M8	.157
MSN-M8-1.0-S062C	•	.591	1.00	4.00	.625	M8	.157
MSN-M8-2.0-S062C	•	.591	2.00	5.00	.625	M8	.157
MSN-M8-4.0-S062C	•	.591	4.00	7.00	.625	M8	.157
MSN-M8-6.0-S062C	•	.591	6.00	9.00	.625	M8	.157
MSN-M10-0.5-S075C	•	.728	.500	3.50	.750	M10	.157
MSN-M10-1.0-S075C	•	.728	1.00	4.00	.750	M10	.157
MSN-M10-2.0-S075C	•	.728	2.00	5.00	.750	M10	.157
MSN-M10-3.0-S075C	•	.728	3.00	6.00	.750	M10	.157
MSN-M10-4.0-S075C	•	.728	4.00	7.00	.750	M10	.157
MSN-M10-5.0-S075C	•	.728	5.00	8.00	.750	M10	.157
MSN-M10-6.0-S075C	•	.728	6.00	9.00	.750	M10	.157
MSN-M12-0.5-S100C	•	.945	.500	3.50	1.00	M12	.236
MSN-M12-1.0-S100C	•	.945	1.00	4.00	1.00	M12	.236
MSN-M12-2.0-S100C	•	.945	2.00	5.00	1.00	M12	.236
MSN-M12-3.0-S100C	•	.945	3.00	6.00	1.00	M12	.236
MSN-M12-4.0-S100C	•	.945	4.00	7.00	1.00	M12	.236
MSN-M12-5.0-S100C	•	.945	5.00	8.00	1.00	M12	.236
MSN-M12-6.0-S100C	•	.945	6.00	9.00	1.00	M12	.236
MSN-M12-8.0-S100C	•	.945	8.00	11.00	1.00	M12	.236
MSN-M16-0.5-S125C	•	1.14	.500	3.50	1.25	M16	.315
MSN-M16-1.0-S125C	•	1.14	1.00	4.00	1.25	M16	.315
MSN-M16-2.0-S125C	•	1.14	2.00	5.00	1.25	M16	.315
MSN-M16-4.0-S125C	•	1.14	4.00	7.00	1.25	M16	.315
MSN-M16-6.0-S125C	•	1.14	6.00	9.00	1.25	M16	.315
MSN-M16-8.0-S125C	•	1.14	8.00	11.00	1.25	M16	.315

Note: Metric carbide shanks also available. See catalog for full listing.

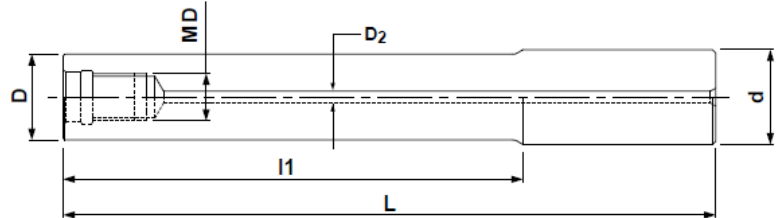
INCH**METRIC**

Modular Head Holders

Modular Head Holders

MGN Type

G-Body with coolant thru

G-Body

Specifications - Inch

CATALOG NUMBER	STK	DIMENSIONS					
		D	L1	L	d	MD	D2
MGN-M6-0.5-S050	•	.452	.500	2.50	.500	M6	.118
MGN-M6-1.0-S050	•	.452	1.00	3.15	.500	M6	.118
MGN-M6-2.0-S050	•	.452	2.00	3.93	.500	M6	.118
MGN-M8-0.5-S062	•	.591	.500	3.50	.625	M8	.157
MGN-M8-1.0-S062	•	.591	1.00	4.00	.625	M8	.157
MGN-M8-2.0-S062	•	.591	2.00	5.00	.625	M8	.157
MGN-M10-0.5-S075	•	.728	.500	3.50	.750	M10	.157
MGN-M10-1.0-S075	•	.728	1.00	4.00	.750	M10	.157
MGN-M10-2.0-S075	•	.728	2.00	5.00	.750	M10	.157
MGN-M12-0.5-S100	•	.945	.500	3.50	1.00	M12	.236
MGN-M12-1.0-S100	•	.945	1.00	4.00	1.00	M12	.236
MGN-M12-2.0-S100	•	.945	2.00	5.00	1.00	M12	.236
MGN-M12-3.0-S100	•	.945	3.00	6.00	1.00	M12	.236
MGN-M16-0.5-S125	•	1.14	.500	3.50	1.25	M16	.315
MGN-M16-1.0-S125	•	1.14	1.00	4.00	1.25	M16	.315
MGN-M16-2.0-S125	•	1.14	2.00	5.00	1.25	M16	.315
MGN-M16-3.0-S125	•	1.14	3.00	6.00	1.25	M16	.315

Specifications - Metric

CATALOG NUMBER	STK	DIMENSIONS					
		D	L1	L	d	MD	D2
MGN-M8-17-S16	•	15.5	17	97	16	M8	4
MGN-M10-30-S20	•	19	30	100	20	M10	4
MGN-M12-35-S25	•	24	35	105	25	M12	4
MGN-M12-85-S25	•	24	85	165	25	M12	4
MGN-M16-37-S32	•	29	37	107	32	M16	6
MGN-M16-77-S32	•	29	77	157	32	M16	6